

This drawing is not intended nor shall it be used for construction purposes unless the signed professional seal of a registered landscape architect, civil engineer or land surveyor employed by The Berkshire Design Group, Inc. is affixed above.

Do not scale drawing for quantity take-offs or construction. Use written dimensions only. If dimensions are incomplete, contact The Berkshire Design Group, Inc. for clarification.

© Copyright The Berkshire Design Group, Inc.  
This drawing and all of its contents are the express property of The Berkshire Design Group, Inc. and shall not be copied or used in any way without the written consent of The Berkshire Design Group, Inc.

Williamsburg  
Safety Complex  
16 Main Street  
Williamsburg, MA

PERMIT SET

SITE LAYOUT  
& PLANTING  
PLAN

Revisions

December 9, 2021  
December 15, 2021  
December 17, 2021  
January 13, 2022

Date: November 4, 2021

Sheet Number

Scale:

1"=20'

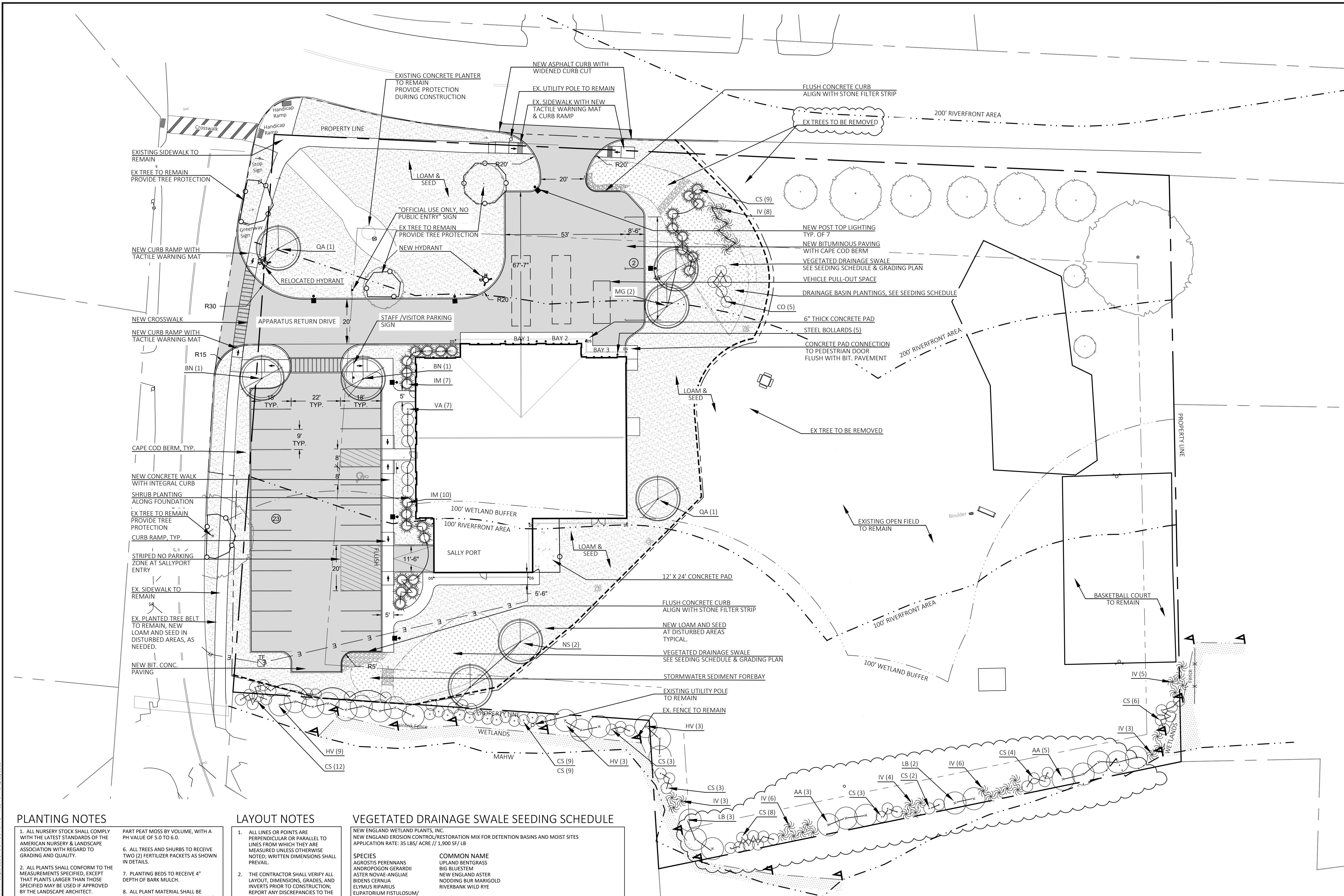
Drawn By:

CS/DS

Checked By:

JS

LC-111



PLANTING NOTES

1. ALL NURSERY STOCK SHALL COMPLY WITH THE LATEST STANDARDS OF THE AMERICAN NURSERY & LANDSCAPE ASSOCIATION WITH REGARD TO GRADING AND QUALITY.
2. ALL PLANTS SHALL CONFORM TO THE MEASUREMENTS SPECIFIED, EXCEPT THAT PLANTS LARGER THAN THOSE SPECIFIED MAY BE USED IF APPROVED BY THE LANDSCAPE ARCHITECT.
3. ALL PLANTS SHALL BE NURSERY GROWN IN ACCORDANCE WITH GOOD HORTICULTURAL PRACTICES AND SHALL BE GROWN UNDER CLIMATIC CONDITIONS SIMILAR TO THOSE IN THE PROJECT LOCALITY FOR AT LEAST TWO YEARS.
4. BALLED AND BURLAPPED PLANTS (B&B) SHALL BE MOVED WITH THE ROOT SYSTEM AS SOLID UNITS; ROOT BALLS SHALL BE FIRMLY WRAPPED WITH BURLAP. CONTAINER GROWN PLANTS SHALL NOT BE REMOVED FROM CONTAINER PRIOR TO THE TIME OF INSTALLATION; ROOT SYSTEM SHALL BE FIRMLY SET IN CONTAINER.
5. PLANTING SOIL MIX SHALL CONSIST OF SEVEN (7) PARTS LOAM AND ONE (1)

1. PART PEAT MOSS BY VOLUME, WITH A PH VALUE OF 5.0 TO 6.0.
6. ALL TREES AND SHRUBS TO RECEIVE TWO (2) FERTILIZER PACKETS AS SHOWN IN DETAILS.
7. PLANTING BEDS TO RECEIVE 4" DEPTH OF BARK MULCH.
8. ALL PLANT MATERIAL SHALL BE GUARANTEED FOR ONE FULL GROWING SEASON (ONE YEAR) AFTER INSTALLATION.
9. ANY PLANT MATERIAL WHICH DIES, TURNS BROWN OR UNEXPECTEDLY DEFOLIATES PRIOR TO ACCEPTANCE OF WORK SHALL BE PROMPTLY REMOVED FROM THE SITE AND REPLACED WITH MATERIAL OF THE SAME SPECIES, QUALITY, SIZE AND MEETING ALL PLANTING SPECIFICATIONS.
10. PLANTING LAYOUT SHALL BE APPROVED BY THE LANDSCAPE ARCHITECT PRIOR TO INSTALLATION.
11. ALL DISTURBED AREAS NOT PLANTINGS OR MULCH SHALL BE LOAM AND WILDFLOWER SEED MIX.

LAYOUT NOTES

1. ALL LINES OR POINTS ARE PERPENDICULAR OR PARALLEL TO LINES FROM WHICH THEY ARE MEASURED UNLESS OTHERWISE NOTED; WRITTEN DIMENSIONS SHALL PREVAIL.
2. THE CONTRACTOR SHALL VERIFY ALL LAYOUT, DIMENSIONS, GRADES, AND INVERTS PRIOR TO CONSTRUCTION; REPORT ANY DISCREPANCIES TO THE ENGINEER. ALL DISCREPANCIES SHALL BE RESOLVED IN WRITING PRIOR TO BEGINNING WORK.
3. ALL AREAS DISTURBED FROM CONSTRUCTION ACTIVITY TO BE RAKED, SMOOTHED, FERTILIZED AND SEEDED WITH PERENNIAL TURFGRASSES UNLESS OTHERWISE NOTED.
4. ALL NEW WALKS AND SURFACES TO MEET EXISTING WALKS AND SURFACES WITH SMOOTH, CONTINUOUS LINE AND GRADE.
5. THE CONTRACTOR SHALL NOT INSTALL CONCRETE DURING ADVERSE WEATHER CONDITIONS (RAIN, SLEET, ETC.) UNLESS OTHERWISE DIRECTED BY THE LANDSCAPE ARCHITECT.

VEGETATED DRAINAGE SWALE SEEDING SCHEDULE

NEW ENGLAND WETLAND PLANTS, INC.  
NEW ENGLAND EROSION CONTROL/RESTORATION MIX FOR DETENTION BASINS AND MOIST SITES  
APPLICATION RATE: 35 LBS/ ACRE // 1,900 SF/ LB

**SPECIES**  
AGROSTIS PERENNANS  
ANDROPOGON GERARDII  
ASTER NOVAE-ANGLIAE  
BIDENS CERNUA  
ELYMUS RIPARIUS  
EUPATORIUM FISTULOSUM/  
EUPATORIUM PERFORIATUM  
FESTUCA RUBRA  
JUNCUS EFFUSUS  
PANICUM VIRGATUM  
SCHIZACHYRIUM SCOPARIUM  
SCIRPUS CYPERINUS  
VERBENA HASTATA

**COMMON NAME**  
UPLAND BENTGRASS  
BIG BLUESTEM  
NEW ENGLAND ASTER  
NODDING BUR MARIGOLD  
RIVERBANK WILD RYE  
HOLLOW-STEM JOE PYE WEED  
BONESET  
CREEPING RED FESCUE  
SOFT RUSH  
SWITCH GRASS  
LITTLE BLUESTEM  
WOOL GRASS  
BLUE VERVAIN

PLANTING SCHEDULE

CODE	SPECIES	COMMON NAME	QUANTITY	SIZE
AA	ARONIA ARBUTIFOLIA	RED CHOKECHERRY	8	2-3 GAL
BN	BETULA NIGRA	RIVER BIRCH	2	1.5"-2" CAL
CO	CEPHALANTHUS OCCIDENTALIS	BUTTON BUSH	5	2-3 GAL
CS	CORNUS SERICEA	RED OSIER DOGWOOD	68	2-3 GAL
HV	HAMAMELIS VIRGINIANA	WITCHHAZEL	15	5'-6" HT
IM	ILEX X MESSERIAE	BLUE HOLLY	17	2-3 GAL
IV	ILEX VERTICILLATA	WINTER BERRY	35	2-3 GAL
LB	LINDERA BENZOIN	SPICEBUSH	5	3'-4" HT
MG	METASEQUOIA GLYPTOSTROBODES	DAWN REDWOOD	2	2 GAL*
NS	NYSSA SYLVATICA	BLACK GLIM	2	2 GAL*
QA	QUERCUS ALBA	WHITE OAK	2	2 GAL*
VA	VIBURNUM ACERIFOLIUM	MAPLELEAF VIBURNUM	7	2-3 GAL

\* DENOTES TREES TO BE PROVIDED BY TREE NORTHAMPTON.